



Chesney Court, London, W9 2EG
£1,375 Per Month



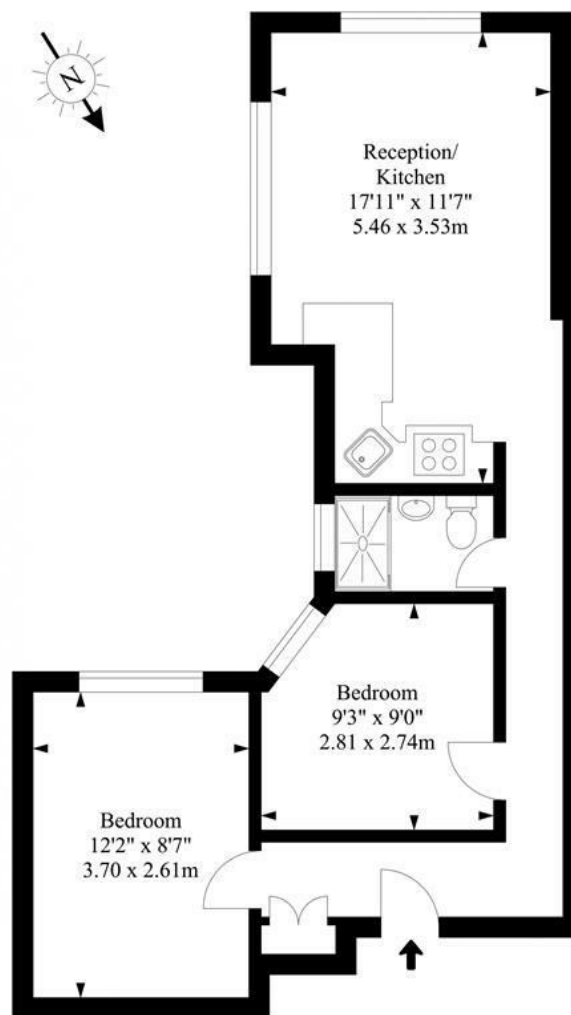


2 x  1 x  1 x 

This wonderful 2 bed 1 bath Flat situated in London W9 is available with the following facilities:
Abundance of natural light, Close to public transport, Double glazing, Fitted Kitchen, Fully Furnished, Shops and amenities nearby.
Available from early March 2021



**Chesney Court,
Shirland Road**
Approx. Gross Internal Area
493.74 Ft² - 45.87 M²



Ground Floor

Illustration For Identification Purposes Only. Not To Scale

Important Notice Debussy Property Service Ltd trading as Braithwait for themselves and for the vendor of this property whose agents they are, give notice that (i) these particulars do not constitute any part of an offer or contract, (ii) all statements contained within these particulars are made without responsibility on the part of Braithwait or the vendor, (iii) whilst none in good faith, none of the statements contained within these particulars are to be relied upon as a statement of representation or fact, (iv) any intending purchaser must satisfy him/herself by inspection or otherwise as to the correctness of each of the statements contained within these particulars, (v) the vendor does not make or give either Braithwait or any person within their employment any authority to make or give any representation or warranty whatsoever in relation to this property. Wide angled lenses may be used in photographs.

Call us on 0207 289 8889 or email sales@braithwait.co.uk

